

“Reconciling mining and the Sustainable Development in the Pacific Countries”



Landcare Research
Manaaki Whenua



Outline

- Problems & Diagnostics
- Positives and Negatives
- Synergies & Priorities
- Innovative Solutions toward Policy Development



Sub-topic sessions

- Sub-topic 1: Enhancing environmental consideration in mining while answering societal needs
- Sub-topic 2: Increasing Knowledge of Social and Environmental Impacts of Deep Sea Mining
- Sub-topic 3: Mining industry, corporate social responsibility as a vector of societal innovation



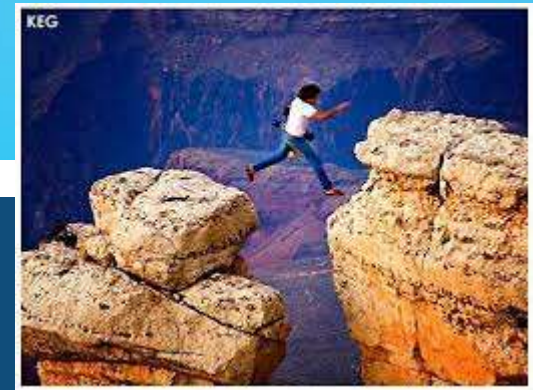
Case studies

- Coal mine, South Island, NZ
- Pre-exploration case study, NC
- Nauru
 - Solwara 1, PNG
 - Cook Islands
 - Phosphate in NZ
 - Koniambo, NC
 - Gold Ridge, Salomon
 - Kudubu, PNG

What is working well

- Political will - Development of policy and law
- Understanding social impact is part of the process
- Recognising the importance of science and problems and gaps
- Transparency/information sharing collaboration and partnership
- Community involvement and interest - strength of landowners/ local communities
- Better understanding of community demands & business are adapting
- Cook Island's set up of SWF (Sovereign Wealth Fund)





Problems and Diagnostics

- Weak governance - Due diligence and transparency
- Inadequate community consultation and engagement
- Social Licence to Operate
- Creation and access to baseline data
- Absence/lack of capacity at local, technical, scientific level etc.
- Assessment and acceptance of risk
- Lifestyle changes & mobility effects
- Cumulative & transboundary effects, e.g., tailing, wastes, fisheries...
- Post-activity site rehabilitation and human impact



Synergies & Priorities



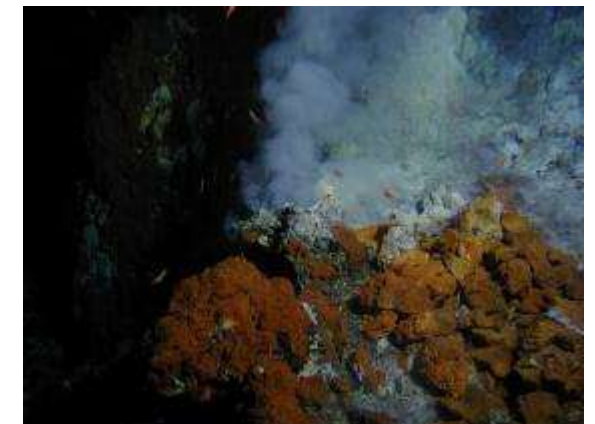
- Collection of, and access to **cross-disciplinary baseline** data, including social, cultural, ecosystem, biodiversity, environmental → e.g., marine spatial planning; resource evaluation
- **Monitoring & Evaluation**
- **Efficient** framework for industry - communities **dialogue**
- Impact assessments, **risk** analysis, impacts on lifestyle changes, monitoring and evaluation, mobility effects
- **Culturally** appropriate engagement techniques
- **Capacity** building for locals and train the trainer programs
- Pollution, toxicology and plume minimisation
- New environmentally **sustainable technologies**



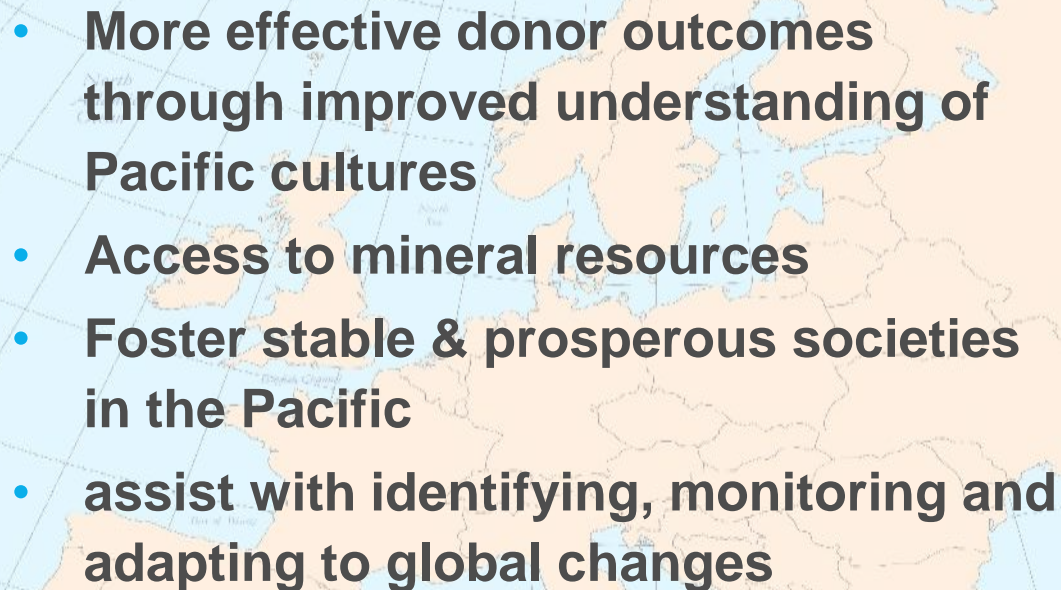
Innovative Solutions for Policy Development

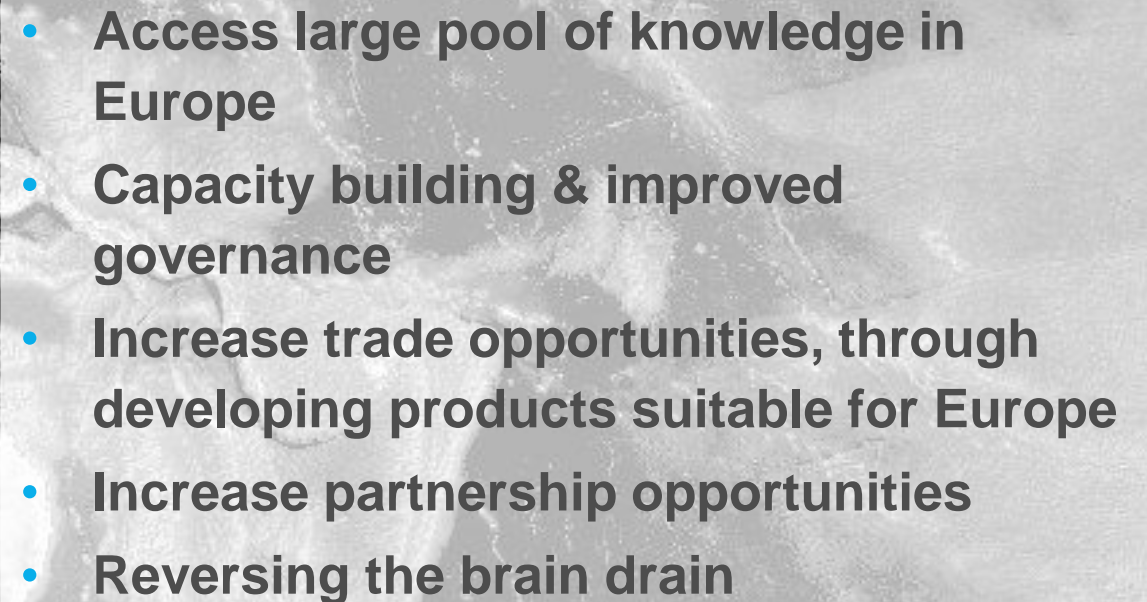
7 potential projects were discussed for future proposal development

- Methodologies for cross-cultural work and communication to better deliver outcomes & increase return on investments
- Non destructive exploration techniques for establishing environmental baseline
- Pacific Centre of Excellence for Social Responsibility and Resources
- Strengthen PPP for exploration, monitoring and capacity building
- Risk assessment tools for deep water and tropical ecosystems
- Translate CSR into financial support, and include legal, economic & environmental managements – e.g., Clean Up Fund



What's in it for you?

- 
- **More effective donor outcomes through improved understanding of Pacific cultures**
 - **Access to mineral resources**
 - **Foster stable & prosperous societies in the Pacific**
 - **assist with identifying, monitoring and adapting to global changes**

- 
- **Access large pool of knowledge in Europe**
 - **Capacity building & improved governance**
 - **Increase trade opportunities, through developing products suitable for Europe**
 - **Increase partnership opportunities**
 - **Reversing the brain drain**

